


Local impact of community-based research

Community consulting report:

Levac Apiaries

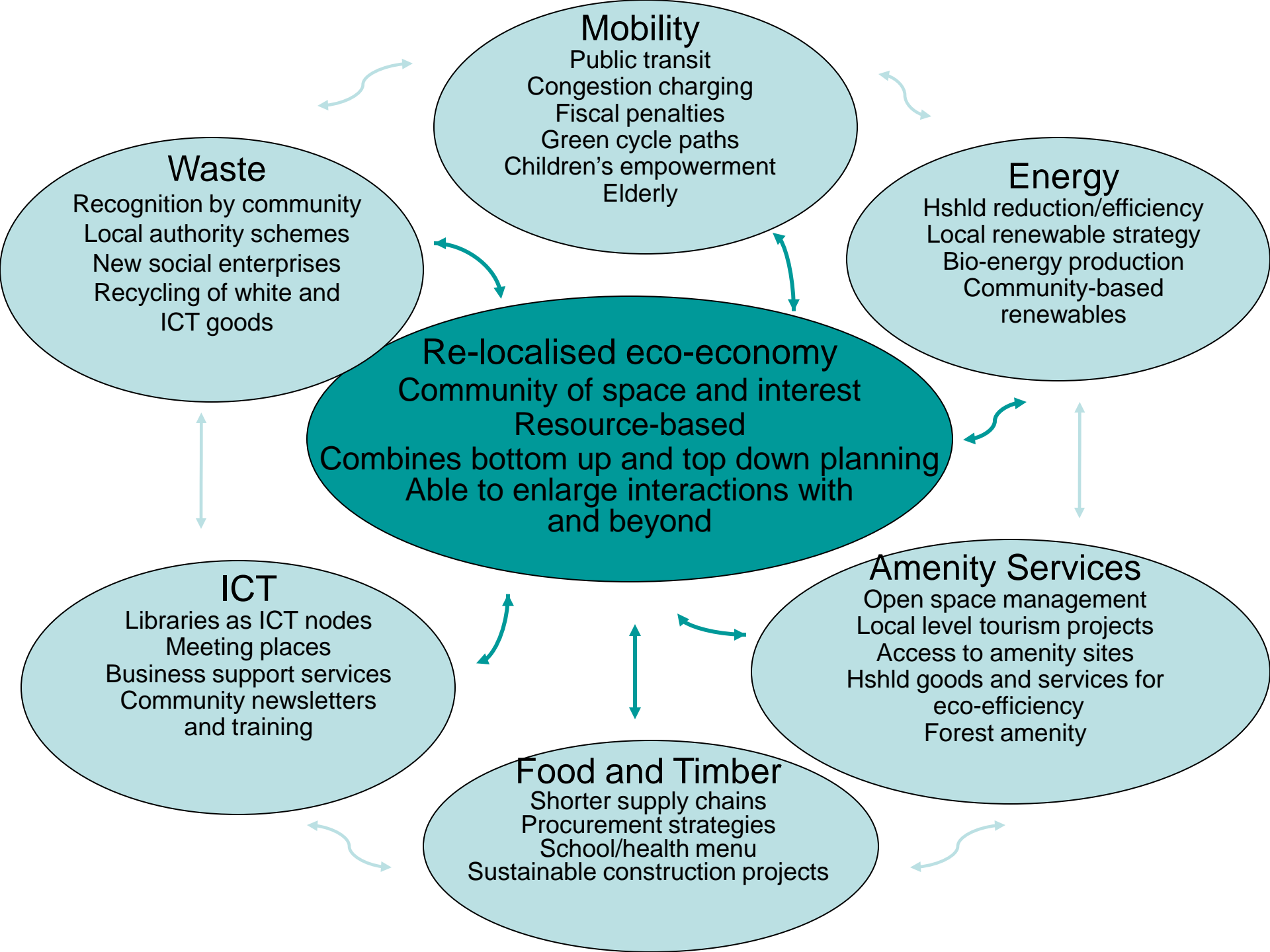
Glengarry Beehive

QuickTime™ and a
decompressor
are needed to see this picture.

- 
- “Today’s fast growing economies owe their growth to a willingness to learn from others as much as exploiting their own original ideas.” (NESTA 2010)

Building capacity

- Adding value in the local food chain:
 - UNBC's work on local food systems:
 - Good Food Value Chain
 - Marsden et al. 2008
 - Sustainable Communities: New spaces for planning, participation and engagement



Building capacity

- Adding value in the local food chain:
 - Marsden et al. 2008
 - Sustainable Communities: New spaces for planning, participation and engagement
 - UNBC's work on local food systems:
 - Good Food Value Chain
 - Models and Best Practices for Building Effective Local Food Systems in Ontario
 - Landman et al. 2009

Models and Best Practices


- Benefits of a sustainable local food system:
 - Better food access = improved human health
 - Robust food system = increased social inclusion
 - Improved local supply chains = regional economic development opportunities
 - Shorter food chains = reduced GHG

The green dimension

- Making green benefits explicit and marketing them
 - Example: Environmental goods and services
 - e.g. Suzuki Foundation Report:
 - Pollinator habitat = \$1,109 per hectare
 - Biodiversity = \$539 per hectare

Summing up...

- Local business showing leadership and capacity for innovation
- Extension of public-private partnerships
- Community working together to build more resilient local economy and community



Thank you
Monieson Centre
Queen's School of Business
PELA CFDC
Eastern Ontario CFDC Network

alison.blaypalmer@gmail.com